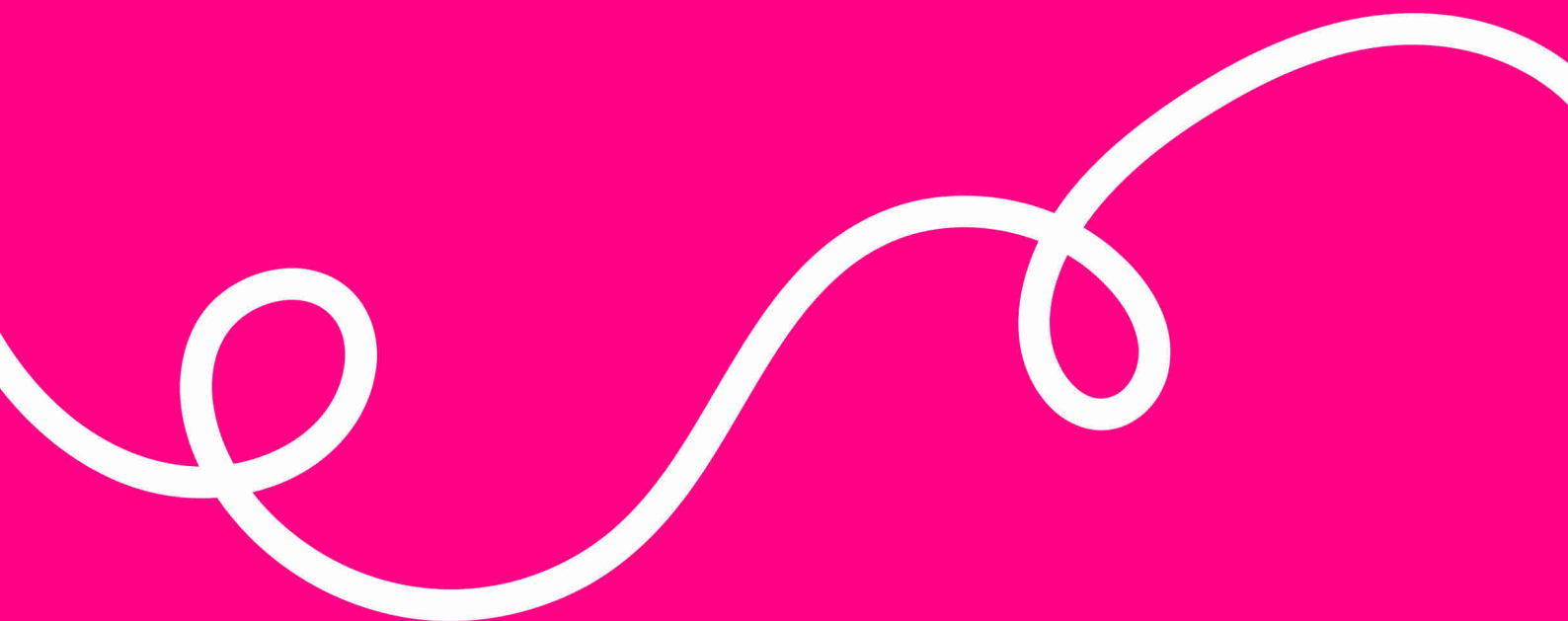


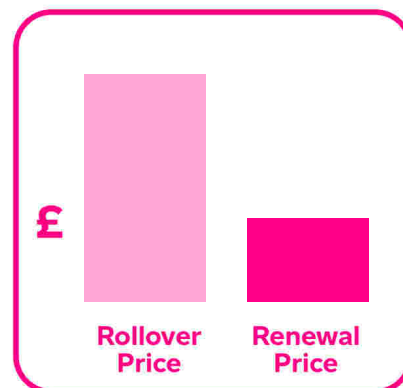
Your renewal summary



Your renewal summary

Save money with transparent pricing

	Wholesale services	Retail services	Annual spend
Rollover price	£1,840.43	£520.29	£2,360.72
Renewal price	£1,840.43	£190.18	£2,030.61
Savings from renewing		63%	£330.11



Prices exclude VAT and are valid for 28 days from date of quote.
All suppliers buy the water at the same wholesale rates!

Key terms & conditions

Please ensure that you have read our full terms & conditions which are available at:

<https://everflowutilities.com/legal/water-standard-terms-conditions>

All prices quoted are based upon a three year contract unless otherwise stated.

Your payment profile with us will be two months up front followed by 34 monthly payments with the last month uncharged.

All prices are based upon payment via Direct Debit and electronic billing unless explicitly stated otherwise.

Early termination fees apply-see full T&Cs.

Wholesale prices may increase or decrease annually (in April or June, depending on your wholesaler).

Why switch to Everflow?

Simple – to save money and receive a higher quality service. As the UK’s fastest growing water supplier, we offer:

- Transparent pricing – wholesale rates plus a fully fixed, great value service fee
- On average, our customers save over £150 a year by switching to Everflow
- ‘Excellent’ customer service
- Dedicated service team
- Average call waiting time - under 2 minutes
- Water audits available

Charges breakdown

The following breakdown is applicable for all of these sites

Customer name	Premises address	Postcode	Supply point ID (SPID)
BRERETON & RAVENHILL PARISH COUNCIL	MAIN ROAD	WS15 IDS	3017071146
BRERETON & RAVENHILL PARISH COUNCIL	Newman Grove Allotments	WS15 IBN	3017504557

Your Everflow rates

Retail fee

The retail fee covers all the services we provide, including meter reading, supplier management, customer support and billing.

Retail fee (£/annum)	£190.18
Wholesale (£/annum)	£1,840.43
Total charge (£/annum)	£2,030.61

Consumption

This is the amount of water we estimate you're going to be using over the next year, based on previous usage.

Wholesale rates

These are the rates you will see on your bill. They are set by your wholesaler; we don't mark them up and we display our retail fee separately so you can see that you're getting excellent value from the retail services we deliver. Wholesalers typically adjust their rates every April.

Consumption (m ³)			Unit rates (£/m ³)		Fixed rates (£/annum)				Total annual wholesale charge
SPID	Water	Waste	Water	Waste	Water	Waste	Surface drainage	Roads drainage	
3017071146	619.81 m ³	588.82 m ³	£1.2883	£1.3000	£25.85	£10.30	£120.07	£17.09	£1,737.28
3017504557	60 m ³	N/A	£1.2883	N/A	£25.85	N/A	N/A	N/A	£103.15

The pricing information above has been generated using industry held information regarding your meter details and consumption. This information is correct as of the date of the quote, but may be subject to change.